

# SOLVE FOR X



It's fiber to anywhere.

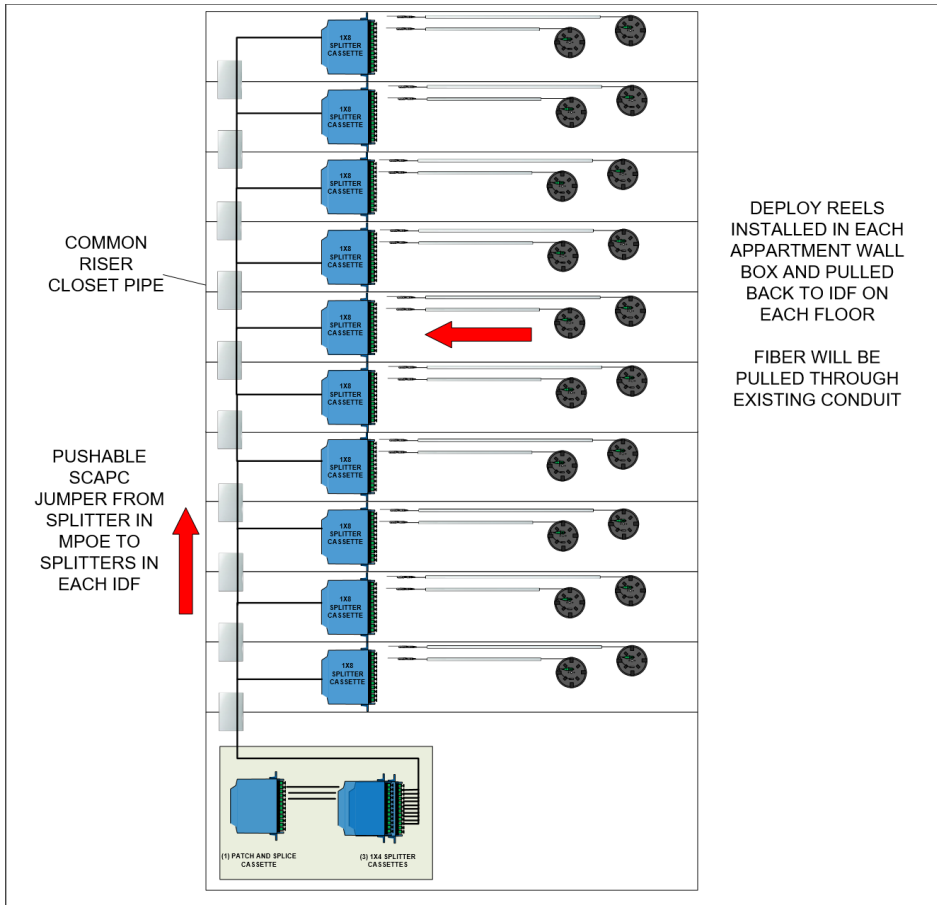
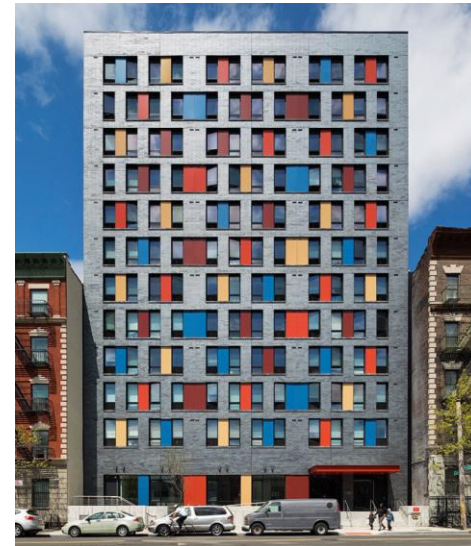
## MDU Case Examples and Kits

*Please note that these are examples of one deployment style. Clearfield offers multiple deployment methods that can be tailored to your specific network needs.*

# Base Kit #1: High Rise MDU



- 10 Floors/Stories
- 80 Living Units (Condos/Apartments)
- Common MPOE (Main Point of Entry); IDF Closets on each floor
- Common Riser Closet through spine of building
- Existing conduit to each unit



Project Bill of Materials	Product Description	Quantity
FDP-XWBF-DPLATE	YourX Flexbox	1
EMZ-012-C1F-SUB	Patch and splice Cassette	1
MPC-PES-CAZ-ZZZ	FIELDSMART SPLITTER MODULE, 1 SLOT CLEARVIEW BLUE CASSETTE LOADED WITH 1 X 1X4 PLANAR SPLITTER COMPONENT(S). COMPONENT IS TERMINATED WITH SC/APC CONNECTORS , FOR FxHD FRAME SYSTEM (MOUNTING BRACKET(S) INCLUDED).	1
MPF-PES-CAZ-ZZZ	FIELDSMART SPLITTER MODULE, 1 SLOT CLEARVIEW BLUE CASSETTE LOADED WITH 1 X 1X8 PLANAR SPLITTER COMPONENT(S). COMPONENT IS TERMINATED WITH SC/APC CONNECTORS , FOR FxHD FRAME SYSTEM (MOUNTING BRACKET(S) INCLUDED).	10
PA1-001-CZB-CZB 001F	PATCHCORD, FIBER, SC/APC TO SC/APC , STANDARD BOOTS, SIMPLEX SM RISER RATED 2MM JACKET, 001 FEET	3
SRD-A-1SA-B-C	Deploy Reel - 300FT	40
SRD-A-1SA-B-8	Deploy Reel - 200FT	20
SRD-A-1SA-B-4	Deploy Reel - 100FT	20
FS-AA1-01-AZZ-BZZ-0020F	30' FieldShield SC/SC Pushable Jumper	1
FS-AA1-01-AZZ-BZZ-0030F	45' FieldShield SC/SC Pushable Jumper	1
FS-AA1-01-AZZ-BZZ-0045F	60' FieldShield SC/SC Pushable Jumper	1
FS-AA1-01-AZZ-BZZ-0060F	75' FieldShield SC/SC Pushable Jumper	1
FS-AA1-01-AZZ-BZZ-0075F	90' FieldShield SC/SC Pushable Jumper	1
FS-AA1-01-AZZ-BZZ-0090F	20' FieldShield SC/SC Pushable Jumper	1
FS-AA1-01-AZZ-BZZ-00105F	20' FieldShield SC/SC Pushable Jumper	1
FS-AA1-01-AZZ-BZZ-0120F	20' FieldShield SC/SC Pushable Jumper	1
FS-AA1-01-AZZ-BZZ-00135F	20' FieldShield SC/SC Pushable Jumper	1
FS-AA1-01-AZZ-BZZ-0150F	20' FieldShield SC/SC Pushable Jumper	1
FS-AA1-01-AZZ-BZZ-00165F	20' FieldShield SC/SC Pushable Jumper	1

# Base Kit #2: Low Rise MDU



- 3 floors/stories
- 12 Living Units (Condo/Apartments)
- Common MPOE and building entrance facility
- Existing conduit to each unit from main building communication room

## The Clearfield Solution

- 1 wall boxes with a 1x16 splitter (cassette)
- 12 deploy reels of StrongFiber fed from each unit (300 ft)



Project Bill of Materials		
Product Number	Product Description	Quantity
SRD-A-1SA-B-C	Deploy Reel - 300FT	12
PA1-001-CZB-CZB 001F	PATCHCORD, FIBER, SC/APC TO SC/APC, STANDARD BOOTS, SIMPLEX SM RISER RATED 2MM JACKET, 001 FEET	3
FDP-XWBF-DPLATE	YourX Flexbox	1
EMZ-012-C1F-SUB	Patch and splice Cassette	1
MQH-PES-CAZ-ZZZ	FIELDSMART SPLITTER MODULE, 2 SLOT CLEARVIEW BLUE CASSETTE LOADED WITH 1 X 1X16 PLANAR SPLITTER COMPONENT(S). COMPONENT IS TERMINATED WITH SC/APC CONNECTORS, FOR FxHD FRAME SYSTEM (MOUNTING BRACKET(S) INCLUDED).	1



# Base Kit #3: Garden Style

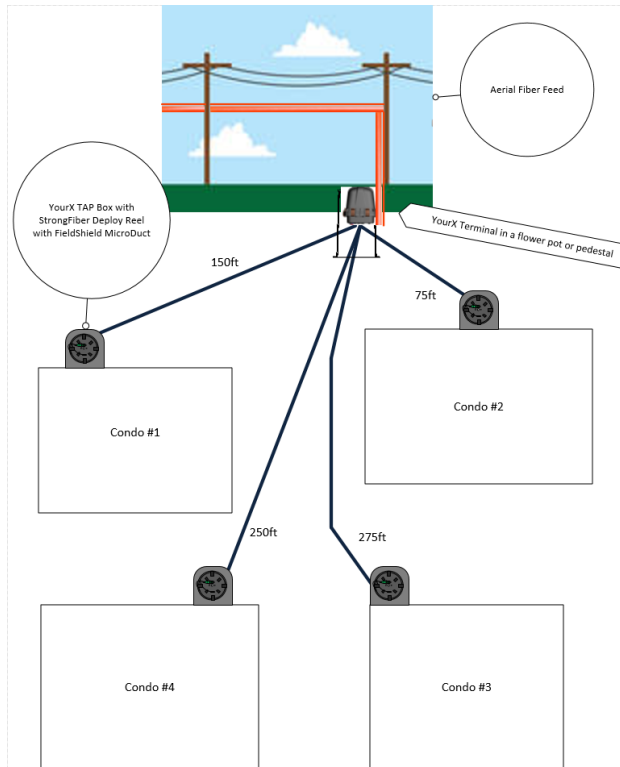


- Townhome or Condo
- 1 floors/stories
- 2 Living Units per building, 4 buildings
- Separate utility exterior location



## The Clearfield Solution

- 4 deploy reels of StrongFiber fed from each unit (<300 ft.)
- Drops only needed when customers become active



Project Bill of Materials		
Product Number	Product Description	Quantity
FSTX-08C-CZZ-5ZZ	YOURx Terminal 1x8 Planar Splitter	1
FS-MEO-T-210-2000F	FieldShield 10mm Microduct - Toneable	1 reel (2000ft)
TAPX-BAA-CDSC-CDS8	YOURx-TAP with 2 reels of StrongFiber (300ft to terminal; 200ft inside condo)	4



**Questions??**

Contact Your Clearfield Representative at  
1-800-422-2537.