

FieldSmart Copper Cable Assemblies

Copper Cable Assemblies: CAT5e and CAT6 Patch Cords



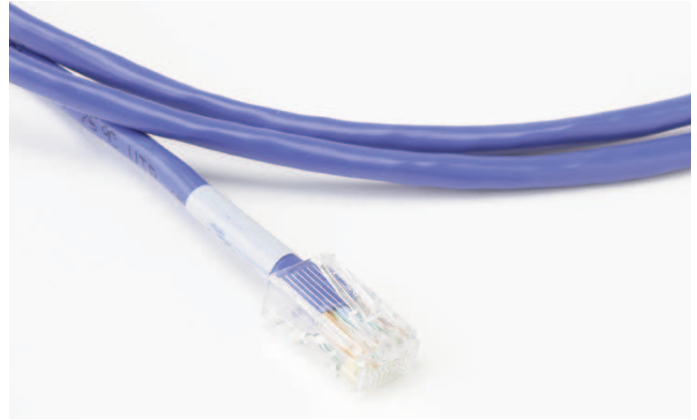
Application

Category 5e and 6 copper patch cords connect a variety of equipment interfaces in both carrier and private networks, as well as customer premise environments.

Description

These patch cords provide physical mated connections between components in 10BASE-T, 100BASE-T, and 155Mbps ATM networks.

Clearfield offers Category 5e and 6 copper patch cords with UTP cable and 8-conductor connectors manufactured to EIA/TIA standards.



CAT5e and CAT6 Patch Cords

Features & Benefits

- 100% tested for continuity and performance
- Meets or exceeds EIA/TIA 568B.2 CAT6
- 350MHz/550MHz
- ETL verified; UL listed; RoHS and WEEE compliant
- Latch guards with easy thumb depression
- Molded strain relief boots
- Nine stocked colors; custom configurations available
- Custom serialization/labeling



Ordering Guide

C T 5 - [] [] [] - N T [] - XXXM or XXXF *

[1] [2] [3] [4]

[1] Select cable color	[2] [3] Select boot colors
7 = Gray (PVC)	N = No boot
0 = Black (PVC)	7 = Gray
1 = White (PVC)	0 = Black
4 = Red (PVC)	1 = White
8 = Orange (PVC)	3 = Pink
9 = Yellow (PVC)	4 = Red
5 = Green (PVC)	8 = Orange
6 = Blue (PVC)	9 = Yellow
2 = Purple (PVC)	5 = Green
A = Light gray (plenum)	6 = Blue
B = Dark gray (plenum)	2 = Purple
C = Black (plenum)	
D = White (plenum)	[4] Select wiring configuration
E = Red (plenum)	1 = 568A
F = Yellow (plenum)	3 = Crossover
G = Green (plenum)	
H = Blue (plenum)	XXXM or XXXF
	XXXF = Length of pigtail in feet
	XXXM = Length of pigtail in meters

* Standard patchcords use stranded, non-shielded cable.

C T 6 - [] [] [] - N T [] - XXXF *

[1] [2] [3] [4]

[1] Select cable color	[2] [3] Select boot colors
7 = Gray (PVC)	N = No boot
0 = Black (PVC)	7 = Gray
1 = White (PVC)	0 = Black
4 = Red (PVC)	1 = White
8 = Orange (PVC)	3 = Pink
9 = Yellow (PVC)	4 = Red
5 = Green (PVC)	8 = Orange
6 = Blue (PVC)	9 = Yellow
2 = Purple (PVC)	5 = Green
H = Light gray (plenum)	6 = Blue
A = Black (plenum)	2 = Purple
B = White (plenum)	
E = Red (plenum)	[4] Select wiring configuration
K = Yellow (plenum)	1 = 568A
F = Green (plenum)	3 = 568A Crossover
G = Blue (plenum)	B = 568A - Certified Cat 6
	D = 568A Crossover - Certified Cat 6
XXXF	
XXXF = Length of pigtail in feet	

* Standard patchcords use stranded, non-shielded cable.