

FieldSmart Copper Cable Assemblies

Copper Cable Assemblies: CAT5e and CAT6 Patch Cords



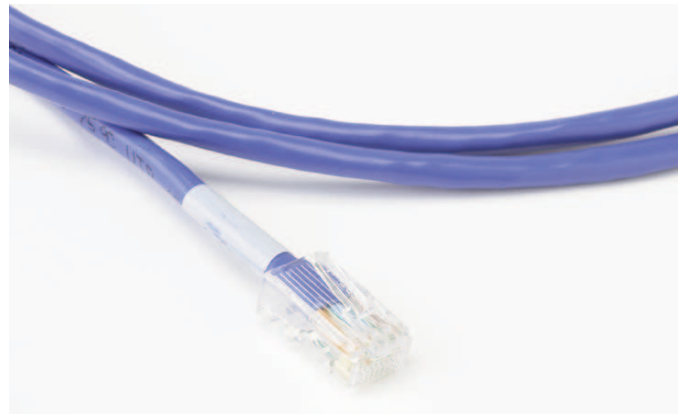
Application

Category 5e and 6 copper patch cords connect a variety of equipment interfaces in both carrier and private networks, as well as customer premise environments.

Description

These patch cords provide physical mated connections between components in 10BASE-T, 100BASE-T, and 155Mbps ATM networks.

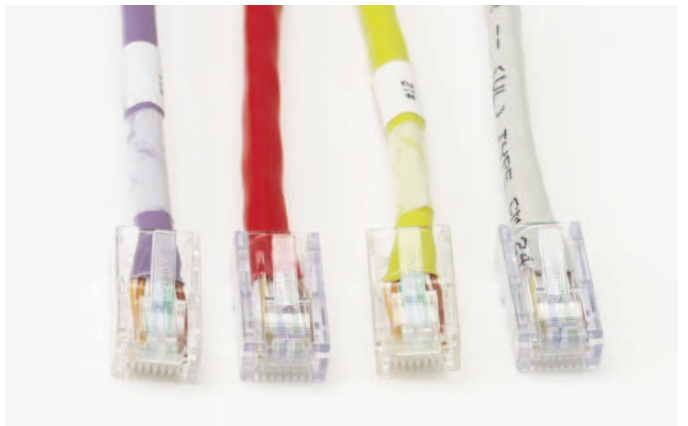
Clearfield offers Category 5e and 6 copper patch cords with UTP cable and 8-conductor connectors manufactured to EIA/TIA standards.



CAT5e and CAT6 Patch Cords

Features & Benefits

- 100% tested for continuity and performance
- Meets or exceeds EIA/TIA 568B.2 CAT6
- 350MHz/550MHz
- ETL verified; UL listed; RoHS and WEEE compliant
- Latch guards with easy thumb depression
- Molded strain relief boots
- Nine stocked colors; custom configurations available
- Custom serialization/labeling



Ordering Guide

C T 5 - - N T - XXXM or XXXF *

1 2 3 4

<p>1 Select cable color</p> <p>7 = Gray (PVC) 0 = Black (PVC) 1 = White (PVC) 4 = Red (PVC) 8 = Orange (PVC) 9 = Yellow (PVC) 5 = Green (PVC) 6 = Blue (PVC) 2 = Purple (PVC) A = Light gray (plenum) B = Dark gray (plenum) C = Black (plenum) D = White (plenum) E = Red (plenum) F = Yellow (plenum) G = Green (plenum) H = Blue (plenum)</p>	<p>2 3 Select boot colors</p> <p>N = No boot 7 = Gray 0 = Black 1 = White 3 = Pink 4 = Red 8 = Orange 9 = Yellow 5 = Green 6 = Blue 2 = Purple</p> <p>4 Select wiring configuration</p> <p>1 = 568A 3 = Crossover</p> <p style="text-align: center;">XXXXM or XXXXF</p> <p>XXXXF = Length of pigtail in feet XXXXM = Length of pigtail in meters</p>
---	--

* Standard patchcords use stranded, non-shielded cable.

C T 6 - - N T - XXXF *

1 2 3 4

<p>1 Select cable color</p> <p>7 = Gray (PVC) 0 = Black (PVC) 1 = White (PVC) 4 = Red (PVC) 8 = Orange (PVC) 9 = Yellow (PVC) 5 = Green (PVC) 6 = Blue (PVC) 2 = Purple (PVC) H = Light gray (plenum) A = Black (plenum) B = White (plenum) E = Red (plenum) K = Yellow (plenum) F = Green (plenum) G = Blue (plenum)</p>	<p>2 3 Select boot colors</p> <p>N = No boot 7 = Gray 0 = Black 1 = White 3 = Pink 4 = Red 8 = Orange 9 = Yellow 5 = Green 6 = Blue 2 = Purple</p> <p>4 Select wiring configuration</p> <p>1 = 568A 3 = 568A Crossover B = 568A - Certified Cat 6 D = 568A Crossover - Certified Cat 6</p> <p style="text-align: center;">XXXXF</p> <p>XXXXF = Length of pigtail in feet</p>
---	---

* Standard patchcords use stranded, non-shielded cable.