

FieldSmart Fiber Cable Assemblies

Cable Assemblies: Distribution Assemblies



Application

Distribution assemblies are used for applications inside buildings and central offices. These cables utilize 900um tight buffer jacket and are available in plenum and riser versions.

Description

Clearfield multi-fiber assemblies are tested in accordance with Telcordia GR-326 compliance 900 micron, guaranteeing reliability.

Features & Benefits

- 100% tested to guarantee performance
- Singlemode, multimode and hybrid cable assemblies
- Large selection of connector styles including:
 - ST, SC, SC APC, FC, LC, LC APC
- Custom lengths to requirements
- Cable cut and terminated to requirements
- Custom breakout lengths
- 4-fiber to 144-fiber (higher fiber counts available to meet unique needs)
- Pulling-eye kits available to speed installation (up to 24-fiber assemblies)
- Detailed interferometer inspection results available as product add-on
- Each term shipped with testing documentation for I.L./R.L.

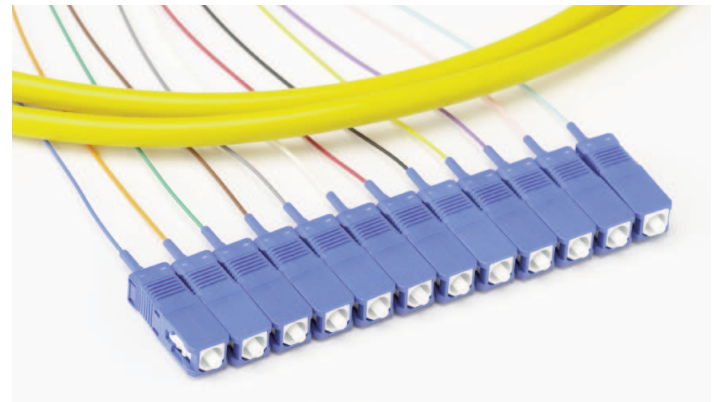
Specifications - Multimode

Minimum Performance Specifications for Terminated MULTIMODE Connectors				
Connector Type	Ferrule Material	Polish Type	Ins. Loss, Typical (dB)	Max. Ins. Loss (dB)
ST	Ceramic	PC	0.25	<0.50
SC	Ceramic	PC	0.25	<0.50
FC	Ceramic	PC	0.25	<0.50
LC	Ceramic	PC	0.25	<0.50
ST	Stainless Steel	Flat	0.40	<0.75

Ordering Guide

D - - - - - **A** - - - - - **A** XXXM or XXXF

<p>1 Select cable construction</p> <p>A = Indoor, Riser Rated B = OSP, Riser Rated C = Plenum G = Armored, Indoor, Riser Rated J = Armored, Plenum</p>	<p>3 Select fiber count *</p> <p>XXX = fiber count</p> <p><small>* Some fiber counts including fiber quantities not divisible by 12 may be built with the next highest fiber count cable. (i.e. - a 60-fiber assembly may be built using a 72-count fiber where the 1st 60 fibers will be terminated and the final 12 fibers will be cut off at the breakout point).</small></p>	<p>5 Select breakout # 1</p> <p>B = 1 meter C = 0.5 meter P = Pulling eye ** S = FieldSmart Tie Panel X = Custom</p>	<p>7 Select breakout # 2</p> <p>B = 1 meter C = 0.5 meter P = Pulling eye ** S = FieldSmart Tie Panel X = Custom Z = Pigtail</p>
<p>2 Select Mode / Type</p> <p>1 = Singlemode, tight buffer 2 = Singlemode, ribbon 3 = Multimode (62.5), tight buffer 4 = Multimode (62.5), ribbon 5 = Multimode (50), tight buffer 6 = Multimode (50), ribbon 7 = Multimode (50) Laser Opt - tight buffer 8 = Multimode (50) Laser Opt - ribbon</p>	<p>4 Select Connector # 1</p> <p>A = SC UPC C = SC APC E = LC UPC G = LC APC J = FC UPC K = FC APC M = ST UPC</p>	<p>6 Select Connector # 2</p> <p>A = SC UPC C = SC APC E = LC UPC G = LC APC J = FC UPC K = FC APC M = ST UPC Z = Pigtail</p>	<p>XXXM or XXXF</p> <p>XXXF = Length of pigtail in feet XXXM = Length of pigtail in meters</p> <p><small>** Pulling eyes can be installed on fiber assemblies up to a 24-fiber count.</small></p>



Distribution Assemblies

For additional information on end-face cleanliness, see page 106 of the Engineering Specifications at the back of this guide.

Specifications - Singlemode

Minimum Performance Specifications for Terminated SINGLEMODE Connectors					
Connector Type	Ferrule Material	Polish Type	Ins. Loss, Typical (dB)	Max. Ins. Loss (dB)	Min. Ret. Loss (dB)
ST	Ceramic	UPC	0.15	0.30	57.00
SC	Ceramic	UPC	0.15	0.30	57.00
FC	Ceramic	UPC	0.15	0.30	57.00
LC	Ceramic	UPC	0.15	0.30	55.00
SC	Ceramic	APC	0.20	0.30	70.00
FC	Ceramic	APC	0.20	0.30	70.00
LC	Ceramic	APC	0.20	0.30	70.00